

FinTech Office Overview



Kwame A. Oppong
Director, FinTech and Innovation
Bank of Ghana

Achieving a Digital Economy



Areas Being Disrupted by FinTech Companies

Lending

Payment
Aggregation

Inward
Remittance

Savings

Acquiring

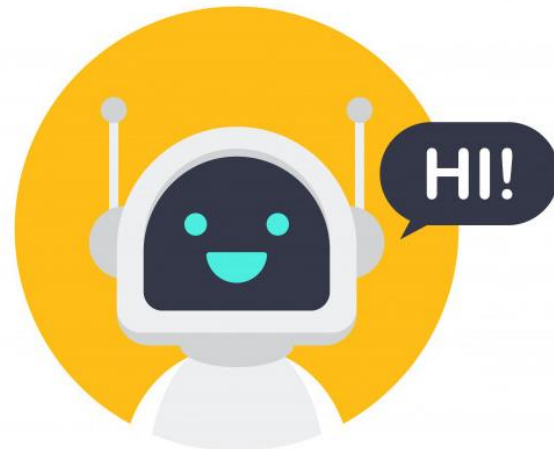
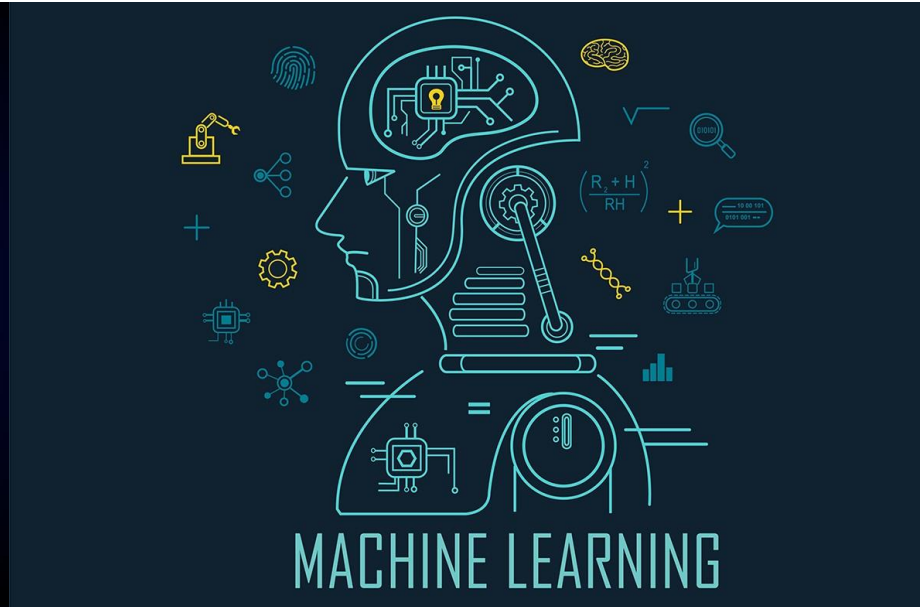
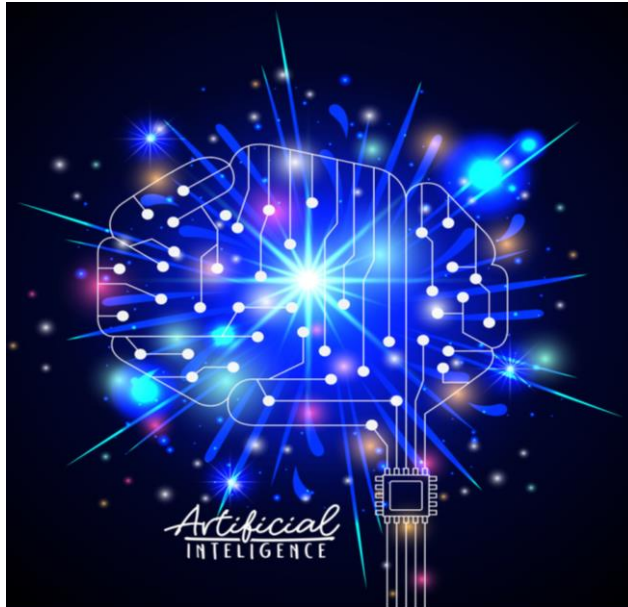
Crowdfunding

Investment

Pension

Mobile
Payments

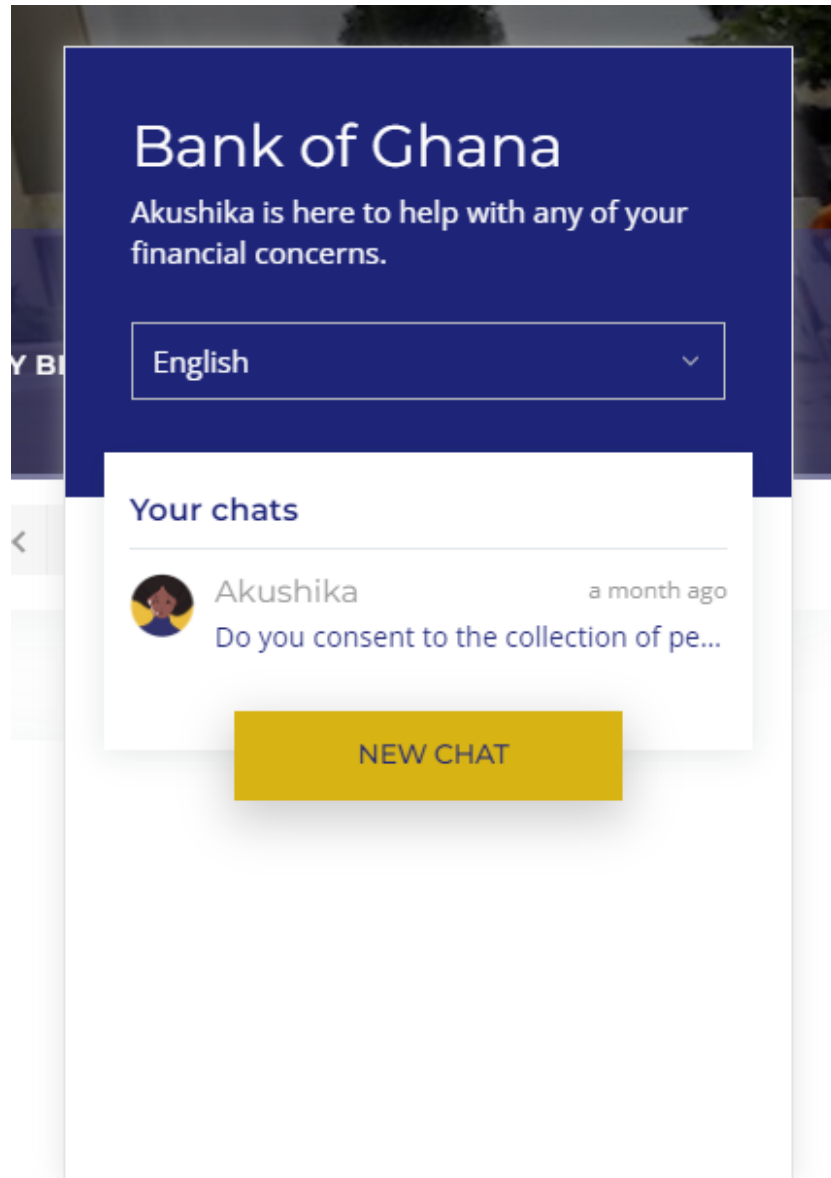
Main Drivers of Trends



IMPLICATION FOR REGULATORS



Aku Shika- Customer Complaint System



AI powered automated customer complaint tool on the BoG website that can also provide the Bank's stakeholders with response to basic questions (FAQs)

Supervisory Intelligence Platforms



The Supervisory intelligence platform is a Management Information System (MIS) facilitates automation and digitisation of reporting and regulatory processes for AML/CFT, Float Management, pattern generation, behavioural and trend analysis, and geographic analyses modules.

Online Regulatory Analytic Surveillance System (ORASS)



ORASS PORTAL

Not logged in

Welcome to ORASS Portal

ORASS Portal is an on-line application that manages all of your formal communications with the Bank of Ghana. Using ORASS Portal, you will be able to complete and submit all required returns on-line. In addition, you will be able to see your reporting institution's profile – the current information held by the Bank of Ghana about your reporting institution – and keep it up to date.

To access ORASS Portal, please enter your username and password below (password is case sensitive):

Username: *

Password: *

Login

[Forgotten Password](#)

The recommended minimum computer requirements for using ORASS Portal are:

- We support the most recent versions of the following browsers; Microsoft Internet Explorer, Microsoft Edge, Firefox, Google Chrome, and Safari.
- For viewing your forms in PDF (and printing where signatures are required) you will need a PDF viewer, such as Adobe Acrobat.
- Forms can be exported as spreadsheets. For this you will need Microsoft Excel.
- A connection to a printer so you can print out hard copies of forms.
- We also recommend that your screen resolution is at least 1920 x 1080 or higher for optimal display.

ORASS Portal is an on-line application that manages all of your formal communications with the Bank of Ghana.

- Submit returns on-line.
- View all regulatory returns submitted by reporting institutions
- Analyze and generate reports from regulatory returns.
- View and edit the profile of reporting institutions.
- View reports published Other Users.

Thank You

